



Georgia-Pacific Gypsum

All the products you need to complete your project on time and within budget.

No matter which of our products you use—Dens® Brand fiberglass mat gypsum panels, ToughRock® Brand treated-paper gypsum boards, or traditional paper-faced ToughRock Brand gypsum boards—you can rely on time-tested Georgia-Pacific Gypsum products for all your project needs.

We have a full line of gypsum panels for every application, every time.



Pre-Rock

Any area where board is hung before the windows and doors are installed, prior to substantial roof installation completion where the project is not well protected from the weather. Examples: pre-rock above ceilings, interior core areas, interior of exterior walls or mechanical areas.

Interior Panels

- DensArmor Plus® Interior Panels
- DensArmor Plus® Abuse-Resistant Interior Panels
- DensArmor Plus® Impact-Resistant Interior Panels
- DensGlass® Shaftliner

Exterior Panels

- DensGlass® Sheathing



Protected/Sheltered

Areas of a building during construction or occupancy that have a reduced moisture intrusion risk, due to their location or the construction schedule. At this phase use panels that are designed to provide more protection against moisture and mold when compared to traditional drywall.

Interior Panels

- ToughRock® Mold-Guard™ Gypsum Boards
- DensGlass® Shaftliner
- DensShield® Tile Backer



Dried-In

In areas of the building where gypsum wallboard will not be directly exposed to water or continuous high humidity. Gypsum wallboard shall not be installed until weather protection is provided.

Interior Panels

- ToughRock® Mold-Guard™ Gypsum Boards
- ToughRock® Gypsum Boards
- DensGlass® Shaftliner
- DensShield® Tile Backer

Use this chart to choose the right product for your next project.

| Products | Application | Pre-Rock | Protected or Sheltered Areas | Dried-In | ASTM Standards & Test Methods* |
|--|--|----------|------------------------------|----------|--|
| DensArmor Plus® Interior Panels | High humidity areas such as bathrooms (non-wet areas), basements, kitchens, laundry and mechanical rooms | ✓ | ✓ | | ASTM C1658 ASTM D3273 ASTM D6329 |
| DensArmor Plus® Abuse-Resistant Interior Panels | High foot traffic areas such as classrooms, hallways, shopping centers | | ✓ | ✓ | ASTM C1629 ASTM C1658 ASTM D3273 ASTM D6329 |
| DensArmor Plus® Impact-Resistant Interior Panels | Ultra high traffic areas such as dorms, operating rooms, correctional facilities | ✓ | ✓ | | ASTM C1629 ASTM C1658 ASTM D3273 ASTM D6329 |
| ToughRock® Mold-Guard™ Gypsum Boards | High humidity areas such as kitchens, bathrooms (non-wet areas) and laundry rooms | | ✓ | ✓ | ASTM C1396 ASTM D3273 |
| ToughRock® Gypsum Boards | Walls throughout the structure such as bedrooms, offices and hallways | | ✓ | ✓ | ASTM C1396 |
| DensGlass® Sheathing | Exterior sheathing under cladding or EIFS | ✓ | ✓ | N/A | ASTM C1177 ASTM D3273 ASTM D6329 |
| DensGlass® Shaftliner | Mechanical areas, stairways, shaftwalls, chutes, firewalls | ✓ | ✓ | ✓ | ASTM C1658 ASTM D3273 ASTM D6329 |
| DensShield® Tile Backer | Behind tile in wet areas, ultra high humidity areas such as gang bathrooms | | ✓ | ✓ | ASTM C1178 ASTM D3273 ASTM D6329 |

*This column shows test methods, manufacturing and performance standards. For more information on specific references, please refer to technical brochures for each product, available at www.gpgypsum.com or applicable ASTM standards.

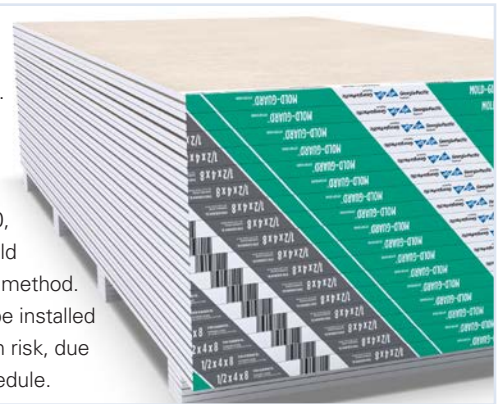
U.S.A. Georgia-Pacific Gypsum LLC
Georgia-Pacific Gypsum II LLC
Canada Georgia-Pacific Canada LP

Sales Information & Order Placement
U.S.A. West: **1-800-824-7503**
Midwest: **1-800-876-4746**
South Central: **1-800-231-6060**
Southeast: **1-800-327-2344**
Northeast: **1-800-947-4497**

CANADA Canada Toll Free: **1-800-387-6823**
Quebec Toll Free: **1-800-361-0486**

Technical Information
Georgia-Pacific Gypsum Technical Hotline
U.S.A. and Canada: **1-800-225-6119**
www.gpgypsum.com

ToughRock® Mold-Guard™ gypsum boards are perfect for kitchens, laundry rooms and non-wet areas of bathrooms. They're designed to provide extra protection against mold compared to traditional paper-faced gypsum boards. ToughRock Mold-Guard has scored a 10, the highest level of performance for mold resistance under the ASTM D3273 test method. During construction, these boards can be installed in areas with reduced moisture intrusion risk, due to their location or the construction schedule.



TRADEMARKS Unless otherwise noted, all trademarks are owned by or licensed to Georgia-Pacific Gypsum LLC.

UPDATES AND CURRENT INFORMATION The information in this document may change without notice. Visit our website at www.gpgypsum.com for updates and current information.

WARRANTIES, REMEDIES AND TERMS OF SALE For current warranty information for this product, please go to www.gpgypsum.com and select the product for warranty information. All sales of this product by Georgia-Pacific are subject to our Terms of Sale available at www.gpgypsum.com.

CAUTION: For product fire, safety and use information, go to www.buildgp.com/safetyinfo or call 1-800-225-6119.

HANDLING AND USE – CAUTION: These products contain fiberglass facings which may cause skin irritation. Dust and fibers produced during the handling and installation of the product may cause skin, eye and respiratory tract irritation. Avoid breathing dust and minimize contact with skin and eyes. Wear long sleeve shirts, long pants and eye protection. Always maintain adequate ventilation.

Use a dust mask or NIOSH/MSHA approved respirator as appropriate in dusty or poorly ventilated areas.

FIRE SAFETY CAUTION Passing a fire test in a controlled laboratory setting and/or certifying or labeling a product as having a one-hour, two-hour, or any other fire resistance or protection rating and, therefore, as acceptable for use in certain fire rated assemblies/systems, does not mean that either a particular assembly/system incorporating the product, or any given piece of the product itself, will necessarily provide one-hour fire resistance, two-hour fire resistance, or any other specified fire resistance or protection in an actual fire. In the event of an actual fire, you should immediately take any and all actions necessary for your safety and the safety of others without regard for any fire rating of any product or assembly/system.

