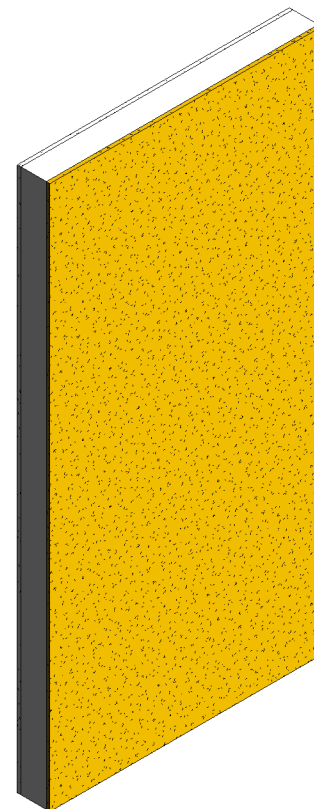
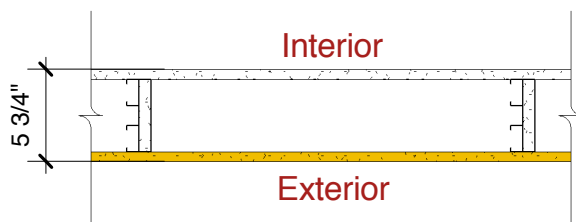


DensGlass® Sheathing

Exterior: 5/8" (15.9 mm) **DenGlass® Fireguard®** Sheathing gypsum board applied vertically to one side of a double row of 1-5/8" (41 mm) steel studs 24" (610 mm) o.c. and not less than 1" (25 mm) apart with 1" (25 mm) Type S drywall screws 8" (203 mm) o.c. at edges and top and bottom runners, 8" (203 mm) o.c. in field. 5/8" (15.9 mm) gypsum board pieces 12" (305 mm) long by 4-1/2" (114 mm) wide located at 1/3 points used as cross braces fastened to stud pairs with three 1" (25 mm) Type S drywall screws at each end of brace. Optional 25 gauge (18 mils), stud or runner pieces not less than 4-1/2" (114 mm) long may be used as cross braces and attached with two No. 8 1/2" (13 mm) self-drilling steel screws at each end.

Interior: 5/8" (15.9 mm) **ToughRock® Fireguard®** or 5/8" (15.9 mm) **DensArmor Plus® Fireguard®** gypsum board applied vertically to a double row of 1-5/8" (41 mm) steel studs 24" (610 mm) o.c. and not less than 1" (25 mm) apart with 1" (25 mm) Type S drywall screws 8" (203 mm) o.c. at edges, top, and bottom runners, 12" (305 mm) o.c. in field. Stagger joints 24" (610 mm) each side. Sound Tested with 3-1/2" (89 mm) fiberglass insulation, stapled to one side in cavity.




Georgia-Pacific
 Gypsum
 Website: www.gpgypsum.com

**Georgia-Pacific
 Gypsum**
 133 Peachtree St.
 Atlanta, Georgia 30303
 PH: 1-(800)-225-6119

DensGlass® Sheathing

Assembly:	U420-02	UL U420
Date:	December 2012	
Drawn by:	JAT	
Checked by:	RSS	Fire Rating: 1 Hr