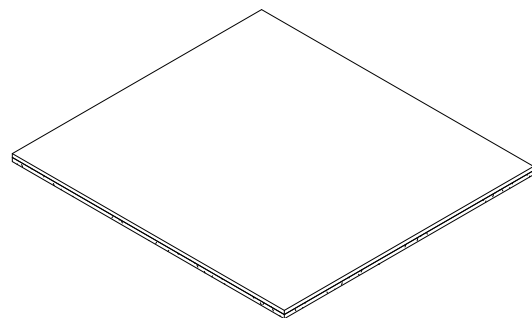
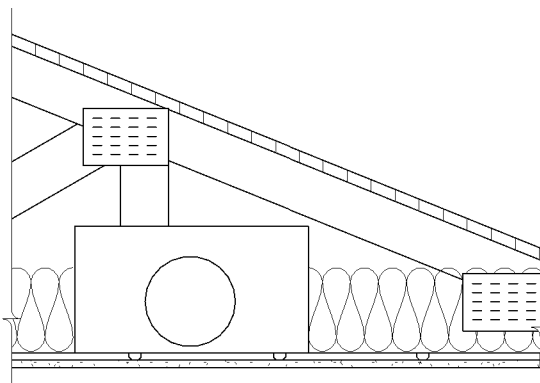


# DensArmor Plus® Fireguard C® Ceiling

## Roof/Ceiling Wood Framed

One layer of 5/8" (15.9 mm) **ToughRock® Fireguard C®** or 5/8" (15.9 mm) or 5/8" (15.9 mm) **DensArmor Plus® Fireguard C®** applied perpendicular to the resilient channels spaced 16" (406 mm) o.c. with 1" (25 mm) Type S screws 12" (305 mm) o.c. Space channels 12" (305 mm) o.c. when insulation is draped over channels. End joints attached with screws 8" (203 mm) o.c. attached to pieces of channel 60" (1524 mm) long located 3" (76 mm) back from either side of the end joint. Resilient channel applied perpendicularly to the bottom of the wood trusses 24" (610 mm) o.c. with 1-1/4" (32 mm) Type S screws. Glass fiber insulation attached to wood panels or draped over channels. When DensArmor Plus Fireguard C is used batt insulation shall be secured to wood structural panels on trusses. Trusses supporting 15/32" (405 mm) wood structural panels applied perpendicular to trusses with adhesive and 6d ring shank nails 12" (305 mm) o.c. Optional ceiling damper (refer to damper manufacturer for damper type).



Website: [www.gpgypsum.com](http://www.gpgypsum.com)

**Georgia-Pacific  
Gypsum**

133 Peachtree St.  
Atlanta, Georgia 30303  
PH: 1-(800)-225-6119

**DensArmor Plus® Fireguard C®  
Ceiling**

Assembly:	P552-02	UL P552
Date:	December 2012	
Drawn by:	JAT	
Checked by:	RSS	Fire Rating: 1 Hr