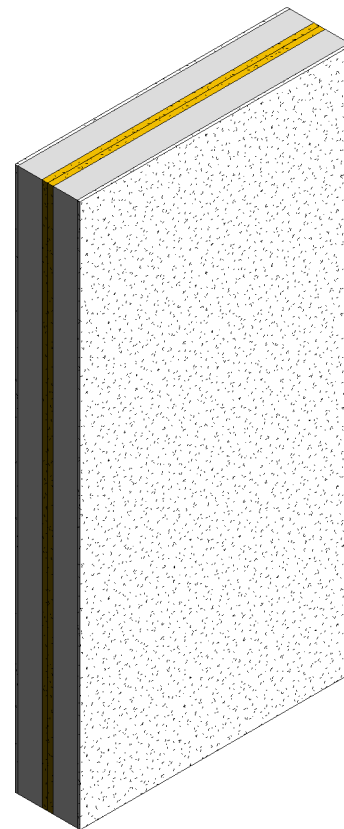
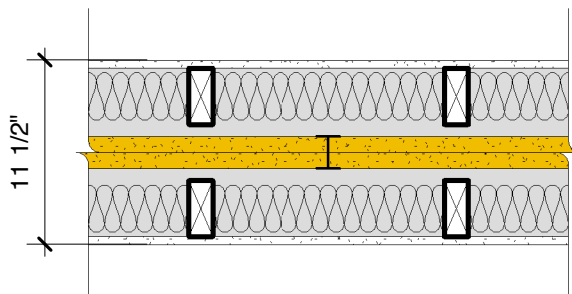


66 STC-Area Separation / DensArmor Plus® Interior Panel

Area Separation Wall

Two layers 1" (25.4 mm) **DensGlass® Shaftliner** inserted in H-Studs 24" (610 mm) o.c. Min. 3/4" (19 mm) air space on both sides must be maintained between linear panels and adjacent framing. Sound Tested with 2"x 4" stud wall with 1/2" (12.7 mm) **ToughRock®** gypsum wallboard or **DensArmor Plus®** interior panels each side of assembly and 3-1/2" (89 mm) fiberglass insulation in stud space both sides. Breakaway clip facings and height of wall differ between UL Design U373 and WHI GP/WA 120-04. Please consult each listing for specific information.



Website: www.gpgypsum.com

Georgia-Pacific Gypsum

133 Peachtree St.
Atlanta, Georgia 30303
PH: 1-(800)-225-6119

66 STC-Area Separation / DensArmor Plus® Interior Panel

Assembly:	U373-02	UL-U373
Date:	December 2012	
Drawn by:	JAT	
Checked by:	RSS	Fire Rating: 2 Hr