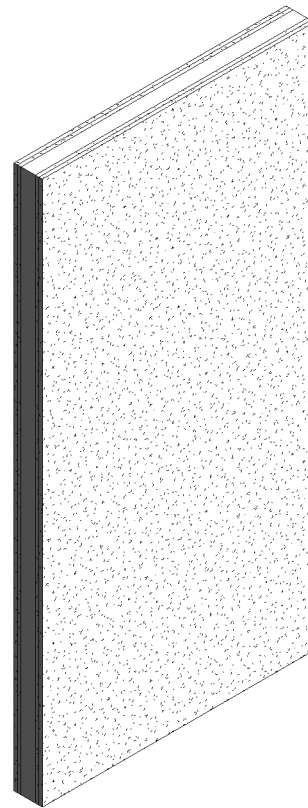
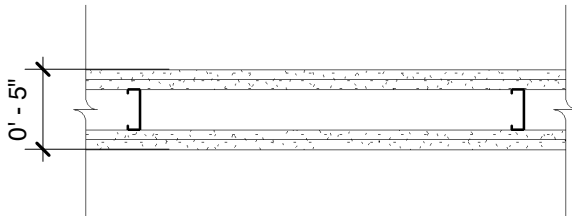


# DensArmor Plus® Abuse-Resistant Panel

**Base Layer:** 5/8" (15.9 mm) **DensArmor Plus® Fireguard® Abuse-Resistant** gypsum board applied vertically to each side of 2-1/2" (64 mm) steel studs 24" (610 mm) with 1" (25 mm) Type S screws 16" (406 mm) o.c.

**Face Layer:** 5/8" (15.9 mm) **DensArmor Plus® Fireguard®** or 5/8" (15.9 mm) **ToughRock® Fireguard®** gypsum board applied vertically to each side with drywall adhesive or secured with 1-5/8" (41 mm) Type S screws 12" (305 mm) o.c. at top and bottom track, 16" (406 mm) o.c. at edge joints and intermediate framing. Stagger joints 24" (610 mm) each layer and side.

**Sound Tested** with 2-1/2" (64 mm) fiberglass insulation.



Website: [www.gpgypsum.com](http://www.gpgypsum.com)

## Georgia-Pacific Gypsum

133 Peachtree St.  
Atlanta, Georgia 30303  
PH: 1-(800)-225-6119

## DensArmor Plus® Abuse-Resistant Panel

Assembly:	U411-05	UL U411
Date:	December 2012	
Drawn by:	JAT	
Checked by:	RSS	Fire Rating: 2 Hr