

# DensArmor Plus® Impact-Resistant Panel

## Steel-Framed Wall

5/8" (15.9 mm) **DensArmor Plus® Impact-Resistant** or 5/8" (15.9 mm) **ToughRock® Fireguard®** or 5/8" (15.9 mm) **DensArmor Plus® Fireguard®** interior panels applied vertically or horizontally to one side of 2-1/2" (64 mm), 20-gauge (30 mils) steel studs 24" (610 mm) o.c. with 1" (25.4 mm) Type S drywall screws 8" (203 mm) o.c. at vertical joints and 12" (305 mm) o.c. at intermediate studs when applied vertically to framing, or 8" (203 mm) o.c. when applied horizontally to framing.

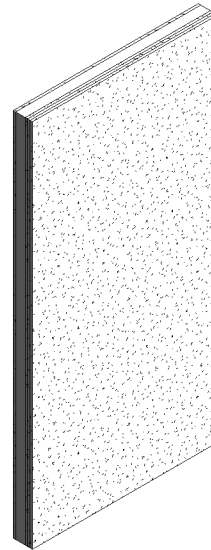
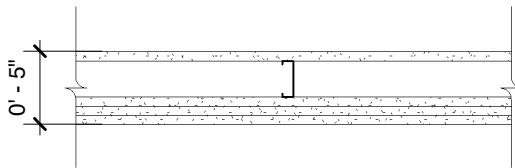
## Opposite side:

**Base layer** – 5/8" (15.9 mm) **DensArmor Plus® Impact-Resistant** or 5/8" (15.9 mm) **ToughRock® Fireguard®** or 5/8" (15.9 mm) **DensArmor Plus® Fireguard®** interior panels applied vertically or horizontally to studs with 1" (25.4 mm) Type S drywall screws 8" (203 mm) o.c. at vertical joints and 12" (305 mm) o.c. at intermediate studs when applied vertically to framing, or 8" (203 mm) o.c. when applied horizontally to framing.

**Second layer** – 5/8" (15.9 mm) **ToughRock® Fireguard®** or 5/8" (15.9 mm) **DensArmor Plus® Fireguard®** interior panels applied vertically or horizontally to studs with 1-5/8" (41 mm) Type S drywall screws 12" (305 mm) o.c.

**Face layer** – 5/8" (15.9 mm) **ToughRock® Fireguard®** or 5/8" (15.9 mm) **DensArmor Plus® Fireguard®** interior panels applied vertically or horizontally to studs with 2-3/8" (60 mm) Type S drywall screws 8" (203 mm) o.c. at vertical joints and 12" (305 mm) o.c. at intermediate studs when applied vertically to framing, or 8" (203 mm) o.c. applied horizontally to framing. Horizontal joints staggered not less than 6" (152 mm) between layers. When gypsum panels are other than 48" (1219 mm) wide, panels are applied horizontally to the framing. Vertical joints staggered 24" (610 mm) each layer and side.

**Sound tested** with 2-1/2" (64 mm) fiberglass insulation.



Website: [www.gpgypsum.com](http://www.gpgypsum.com)

## Georgia-Pacific Gypsum

133 Peachtree St.  
Atlanta, Georgia 30303  
PH. 1-(800)-225-6119

## DensArmor Plus® Impact-Resistant Panel

Assembly:	U421-06	UL U421
Date:	December 2012	
Drawn by:	JAT	Fire Rating: 2 Hr
Checked by:	RSS	