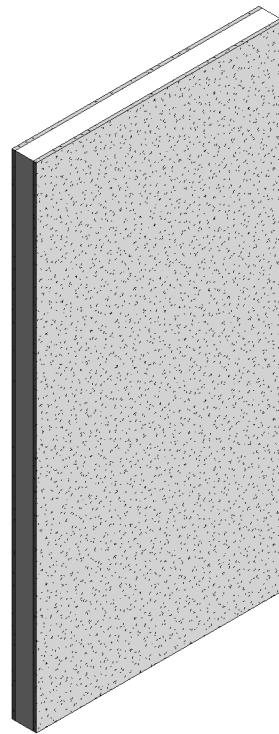
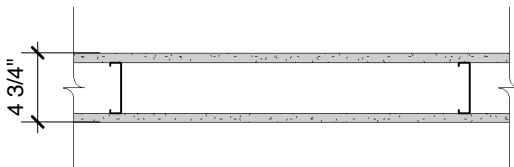


DensShield® Tile Backer

Steel-Framed Wall

5/8" (15.9 mm) **DensShield® Tile Backer** or 5/8" (15.9 mm) **DensArmor Plus® Fireguard®** or 5/8" (15.9 mm) **ToughRock® Fireguard®** gypsum board applied vertically to each side of 3-1/2" (89 mm) corrosion resistant 20 gauge (30 mm) steel studs 24" (610 mm) o.c. with 1" (25 mm) Type S-12 corrosion resistant bugle head screws 6" (152 mm) o.c. Joint staggered 24" (610 mm) on opposite sides.



Website: www.gpgypsum.com

Georgia-Pacific Gypsum

133 Peachtree St.
Atlanta, Georgia 30303
PH. 1-(800)-225-6119

DensShield® Tile Backer

Assembly:	U425-03	UL U425
Date:	December 2012	
Drawn by:	JAT	Fire Rating: 1 Hr
Checked by:	RSS	