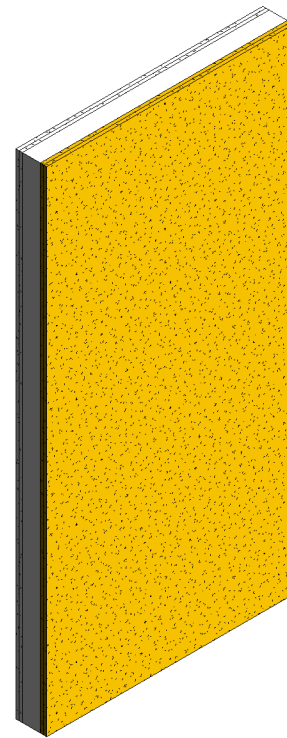
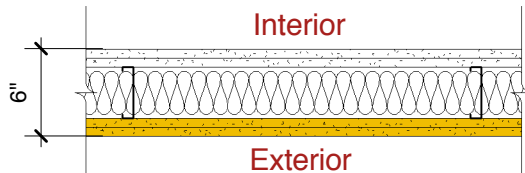


DensGlass® Sheathing

Exterior Steel-Framed Wall

Exterior: Two layers 5/8" (15.9 mm) **DensGlass® Fireguard® Sheathing** applied vertically to min. 3-1/2" (89 mm) corrosion resistant 20-gauge (30 mils) steel studs 24" (610 mm) o.c. Base layer attached with 1" (25 mm) Type S-12 corrosion resistant bugle head screws 8" (203 mm) o.c. Face layer attached with 1-5/8" (41 mm) Type S-12 corrosion resistant bugle head screws spaced 8" (203 mm) o.c. Joints staggered.

Interior: Two layers 5/8" (15.9 mm) **DensArmor Plus® Fireguard®** or 5/8" (15.9 mm) **ToughRock® Fireguard®** gypsum board applied vertically to framing. Base layer attached with 1" (25 mm) Type S-12 bugle head screws 12" (305 mm) o.c. Face layer attached with 1-5/8" (41 mm) Type S-12 bugle head screws spaced 12" (305 mm) o.c. Joints staggered. Insulation to completely fill stud cavity. (Load Bearing: 80% of design load)



Website: www.gpgypsum.com

Georgia-Pacific Gypsum

133 Peachtree St.
Atlanta, Georgia 30303
PH. 1-(800)-225-6119

DensGlass® Sheathing

Assembly:	U425-02	UL U425
Date:	December 2012	
Drawn by:	JAT	Fire Rating: 2 Hr
Checked by:	RSS	