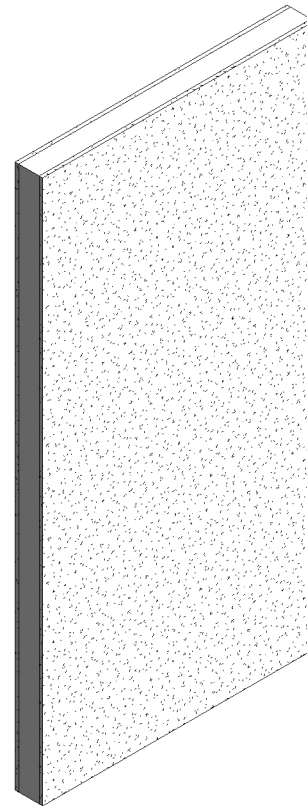
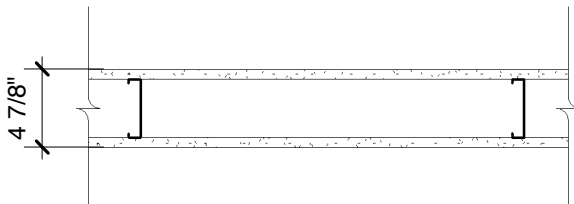


# DensArmor Plus® Fireguard® Interior Panel

## Steel-Framed Wall

5/8" (15.9 mm) **ToughRock® Fireguard®** or 5/8" (15.9 mm) **DensArmor Plus® Fireguard®** gypsum board applied vertically to each side of 3-5/8" (92 mm) steel studs 24" (610 mm) o.c. with 1" (25 mm) Type S drywall screws 8" (203 mm) o.c. at edges and 12" (305 mm) o.c. at intermediate studs.

**Sound Tested** with 3" (76 mm) mineral fiber, 2.5 pcf (40.1 kg/m<sup>3</sup>), in stud space.



Website: [www.gpgypsum.com](http://www.gpgypsum.com)

## Georgia-Pacific Gypsum

133 Peachtree St.  
Atlanta, Georgia 30303  
PH: 1-(800)-225-6119

## DensArmor Plus® Fireguard® Interior Panel

Assembly:	U465-DAP-IP	UL U465
Date:	December 2012	
Drawn by:	JAT	
Checked by:	RSS	Fire Rating: 1 Hr