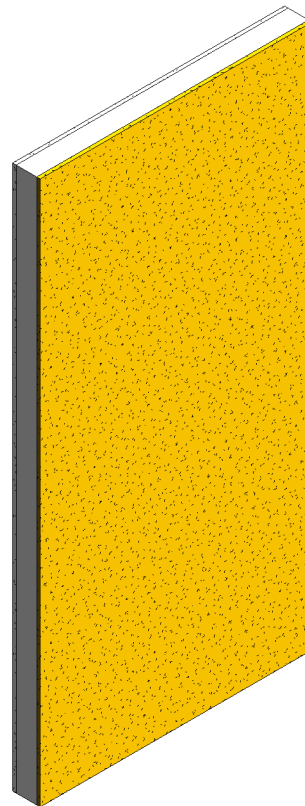
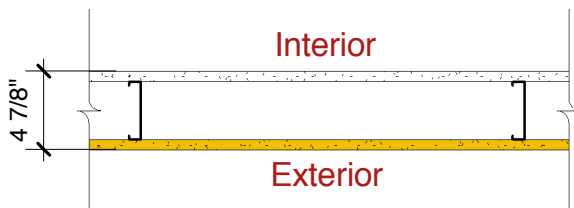


# DensGlass® Fireguard® Sheathing

## Exterior Steel-Framed Wall

**Exterior:** 5/8" (15.9 mm) **DensGlass® Fireguard®** Sheathing applied vertically to min. 3-5/8" (92 mm) corrosion resistant 25-gauge (18 mils) steel studs 24" (610 mm) o.c. with 1" (25 mm) corrosion resistant bugle head screws 8" (203 mm) o.c. at board edges and 8" (203 mm) at intermediate studs.

**Interior:** 5/8" (15.9 mm) **DensArmor Plus® Fireguard®** or 5/8" (15.9 mm) **ToughRock® Fireguard®** gypsum board applied vertically to framing with 1" (25 mm) Type S bugle head screws 8" (203 mm) o.c. at board edges and 12" (305 mm) at intermediate studs.



  
**Georgia-Pacific**  
 Gypsum  
 Website: [www.gpgypsum.com](http://www.gpgypsum.com)

**Georgia-Pacific  
 Gypsum**  
 133 Peachtree St.  
 Atlanta, Georgia 30303  
 PH: 1-(800)-225-6119

DensGlass® Fireguard® Sheathing

Assembly:	U465-DG	UL U465
Date:	December 2012	
Drawn by:	JAT	
Checked by:	RSS	Fire Rating: 1 Hr