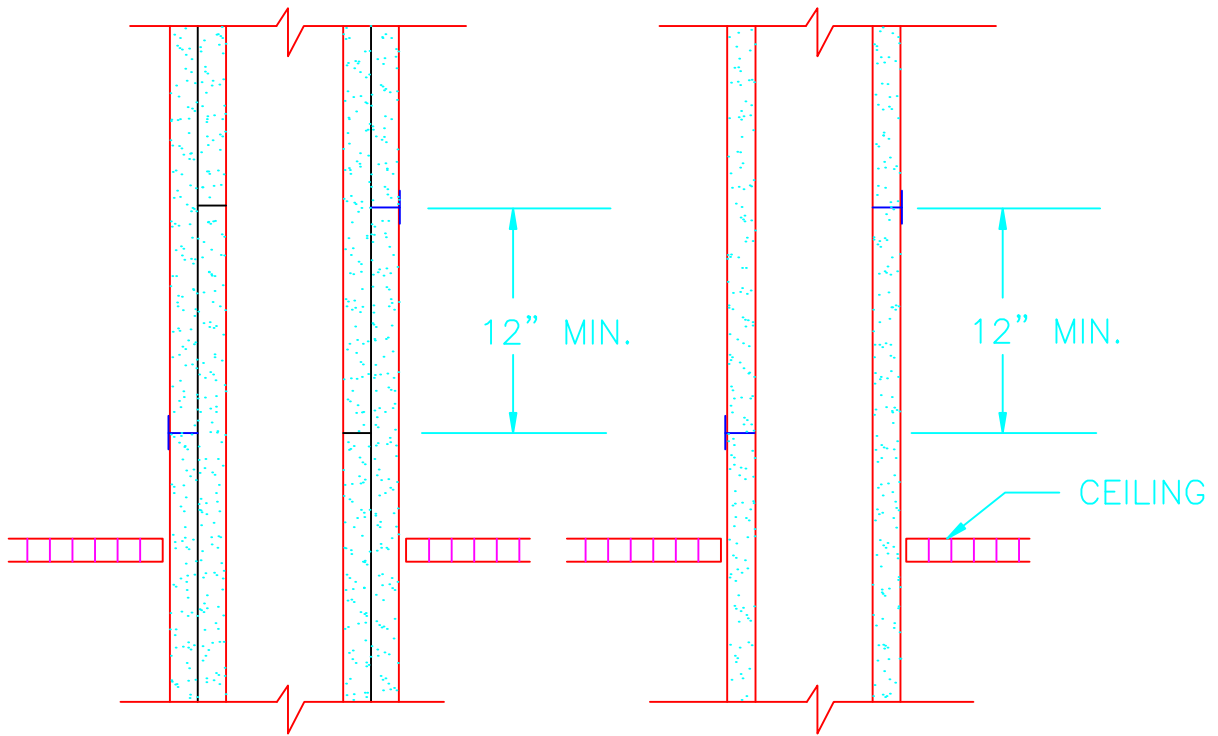


TWO HOUR WALL

ONE HOUR WALL



- JOINTS IN FINISH LAYERS TO BE TAPED WITH TOUGHROCK TAPE AND JOINT COMPOUND
- JOINTS STAGGERED 12" MINIMUM

HORIZONTAL JOINT REQUIREMENTS - ABOVE SUSPENDED CEILINGS

GEORGIA-PACIFIC GYPSUM, LLC IS PROVIDING THIS DETAIL AS A SERVICE TO OUR CUSTOMERS. PLEASE OBTAIN APPROVAL FROM THE PROJECT'S ARCHITECT, ENGINEER OR OTHER DESIGN AUTHORITY AND REVIEW WITH LOCAL BUILDING CODE OFFICIALS BEFORE YOU IMPLEMENT THIS DETAIL.

TECHNICAL SUPPORT
800-225-6119
WEBSITE:
www.gp.com/gypsum

Georgia-Pacific Gypsum

SKETCH NO. 18