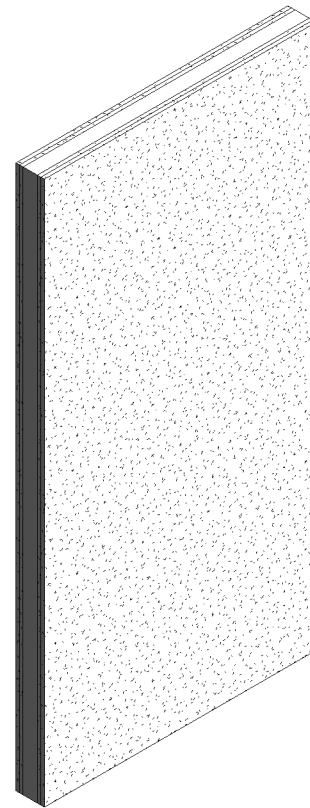
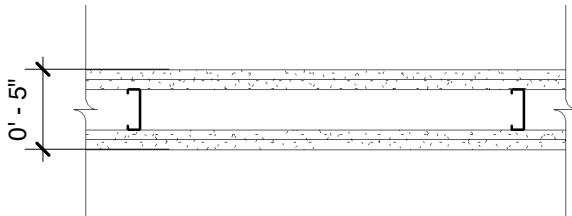


DensArmor Plus® Impact-Resistant Panel

Base Layer: 5/8" (15.9 mm) **DensArmor Plus® Fireguard® Impact-Resistant** gypsum board applied vertically to each side of 2-1/2" (64 mm) 20 gauge (30 mils) steel studs 24" (610 mm) with 1" (25 mm) Type S screws 16" (406 mm) o.c.

Face Layer: 5/8" (15.9 mm) **DensArmor Plus® Fireguard®** or 5/8" (15.9 mm) **ToughRock® Fireguard®** gypsum board applied vertically to each side with drywall adhesive or secured with 1-5/8" (41 mm) Type S screws 12" (305 mm) o.c. at top and bottom track, 16" (406 mm) o.c. at edge joints and intermediate framing. Stagger joints 24" (610 mm) each layer and side.

Sound Tested with 2-1/2" (64 mm) fiberglass insulation.



Website: www.gpgypsum.com

**Georgia-Pacific
Gypsum**

133 Peachtree St.
Atlanta, Georgia 30303
PH: 1-(800)-225-6119

DensArmor Plus® Impact-Resistant
Panel

Assembly:	U411-06	UL U411
Date:	December 2012	
Drawn by:	JAT	
Checked by:	RSS	Fire Rating: 2 Hr