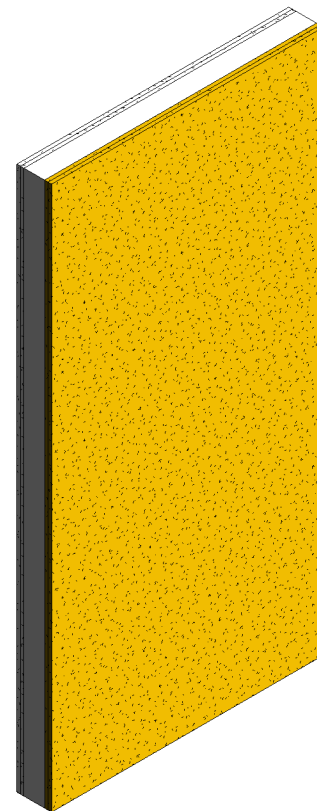
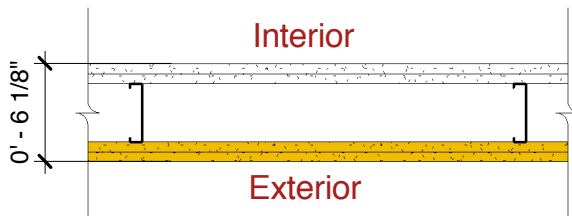


# DensGlass® Fireguard® Sheathing

**Exterior:** Two layers 5/8" (15.9 mm) **DensGlass® Fireguard® Sheathing** applied vertically to min. 3-5/8" (92 mm) corrosion resistant 25 gauge (18 mils) stell studs 24" (610 mm) o.c. Base layer attached with 1" (25 mm) Type S corrosion resistant bugle head screws 8" (203 mm) o.c. Face layer attached with 1-5/8" (41 mm) Type S corrosion resistant bugle head screws spaced 8" (203 mm) o.c. Joints staggered.

**Interior:** 5/8" (15.9 mm) **ToughRock® Fireguard®** or 5/8" (15.9 mm) **DensArmor Plus® Fireguard®** gypsum board applied vertically to framing. Base layer attached with 1" (25 mm) Type S bugle head screws 16" (406 mm) o.c. Face layer attached with 1-5/8" (41 mm) Type S bugle head screws spaced 16" (406 mm) o.c. in the field and along vertical edges and 12" (305 mm) o.c. to the floor and ceiling runners. Joints staggered. Batt. or blanket insulation optional.

**Sound Tested** with 3-1/2" (89 mm) fiberglass insulation, friction fit in 3-5/8" (92 mm) stud space.



Website: [www.gpgypsum.com](http://www.gpgypsum.com)

**Georgia-Pacific  
Gypsum**

133 Peachtree St.  
Atlanta, Georgia 30303  
PH: 1-(800)-225-6119

DensGlass® Fireguard® Sheathing

Assembly:	U411-02A	UL U411
Date:	December 2012	
Drawn by:	JAT	
Checked by:	RSS	Fire Rating: 2 Hr