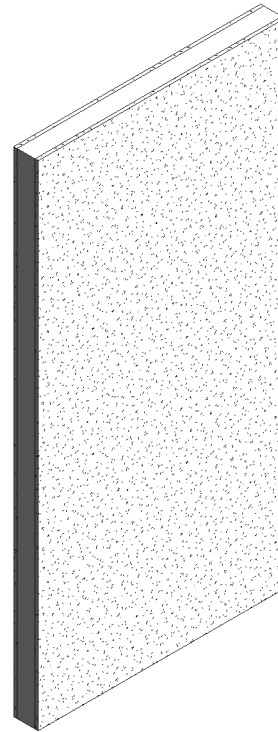
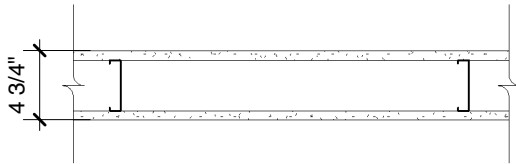


# ToughRock® Mold-Guard™

## Steel-Framed Wall

5/8" (15.9 mm) **ToughRock® Mold-Guard™** or 5/8" (15.9 mm) **DensArmor Plus® Fireguard® Impact-Resistant** or 5/8" (15.9 mm) **ToughRock® Fireguard®** or 5/8" (15.9 mm) **DensArmor Plus® Fireguard®** gypsum board applied vertically to each side of 3-1/2" (89 mm) corrosion resistant 20-gauge (30 mm) steel studs 24" (610 mm) o.c. with 1" (25 mm) Type S-12 corrosion resistant bugle head screws 12" (305 mm) o.c. Joint staggered 24" (610 mm) on opposite sides.



Website: [www.gpgypsum.com](http://www.gpgypsum.com)

### Georgia-Pacific Gypsum

133 Peachtree St.  
Atlanta, Georgia 30303  
PH. 1-(800)-225-6119

### ToughRock® Mold-Guard™

Assembly:	U425-08	UL U425
Date:	December 2012	
Drawn by:	JAT	Fire Rating: 1 Hr
Checked by:	RSS	