

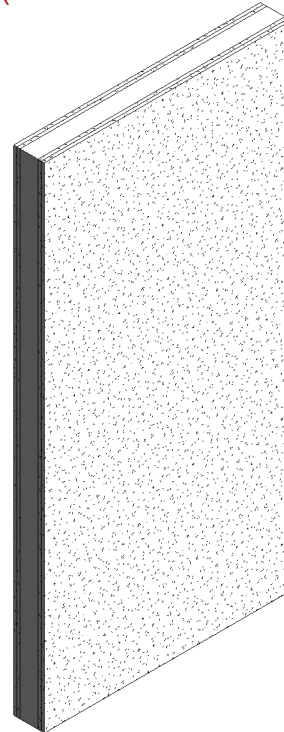
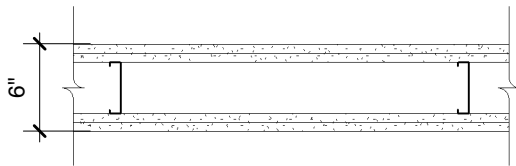
ToughRock® Mold-Guard™

Steel-Framed Wall

Base Layer: 5/8" (15.9 mm) ToughRock® Mold-Guard or 5/8" (15.9 mm) DensArmor Plus® Fireguard® or 5/8" (15.9 mm) ToughRock® Fireguard® gypsum board applied vertically to each side of 3-1/2" (89 mm) 20-gauge (30 mils) steel studs 24" (610 mm) o.c. with 1" (25 mm) Type S-12 drywall screws 12" (305 mm) o.c.

Face Layer: 5/8" (15.9 mm) ToughRock® Mold-Guard or 5/8" (15.9 mm) DensArmor Plus® Fireguard® or 5/8" (15.9 mm) ToughRock® Fireguard® gypsum board applied vertically to each side with 1-5/8" (41 mm) Type S-12 drywall screws 12" (305 mm) o.c. Studs attached to each side of the floor and ceiling runners by welding or with 1/2" (12.7 mm) Type S-12 panhead screws. Joints staggered 24" (610 mm) each layer and side.

Bracing: Lateral bracing spaced not over 40" (1,016 mm) o.c. shall be 1" (25 mm) by 18-gauge (43 mils) steel straps attached to each side or channel bracing attached to each stud with a clip angle. For studs with holes or punch-outs in the web the "Q" factor shall be determined by means of stub column tests. Tested at 80 percent of design load. (LIMITED LOAD-BEARING)



Website: www.gpgypsum.com

Georgia-Pacific Gypsum

133 Peachtree St.
Atlanta, Georgia 30303
PH. 1-(800)-225-6119

ToughRock® Mold-Guard™

Assembly:	U425-08	UL U425
Date:	December 2012	
Drawn by:	JAT	Fire Rating: 2 Hr
Checked by:	RSS	