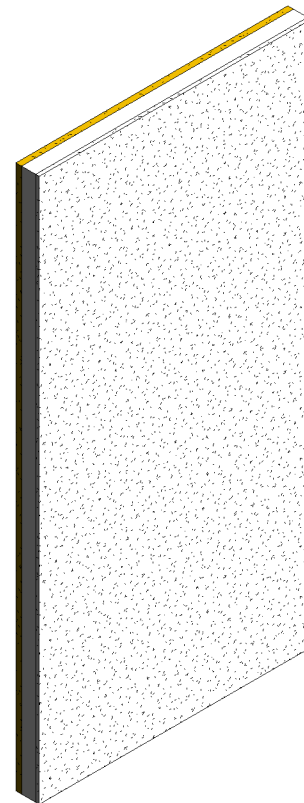
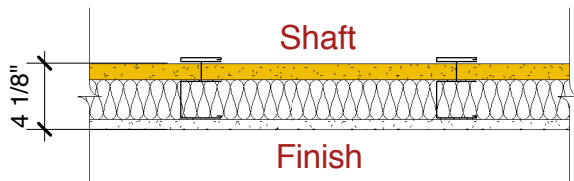


ShaftWall / DensArmor Plus® Impact-Resistant

Fiberglass sound insulation thickness is 1" (25 mm), 2-1/2" (64 mm) and 3-1/2" (89 mm) for C-T, C-H or I studs of 2-1/2" (64 mm), 4" (102 mm) and 6" (152 mm) respectively. Finished one side. Components: 1" (25.4 mm) **DensGlass® Shaftliner** panel, studs and one layer of 5/8" (15.9 mm) **DensArmor Plus® Impact-Resistant** panel or 5/8" (15.9 mm) **DensArmor Plus® Fireguard®** gypsum board installed vertically.




Georgia-Pacific
 Gypsum
 Website: www.gpgypsum.com

**Georgia-Pacific
 Gypsum**
 133 Peachtree St.
 Atlanta, Georgia 30303
 PH: 1-(800)-225-6119

ShaftWall / DensArmor Plus®
Impact-Resistant Panel

Assembly:	WHI GP/WA 60-01	WHI GP/WA 60-01
Date:	December 2012	
Drawn by:	JAT	Fire Rating: 1 Hr
Checked by:	RSS	