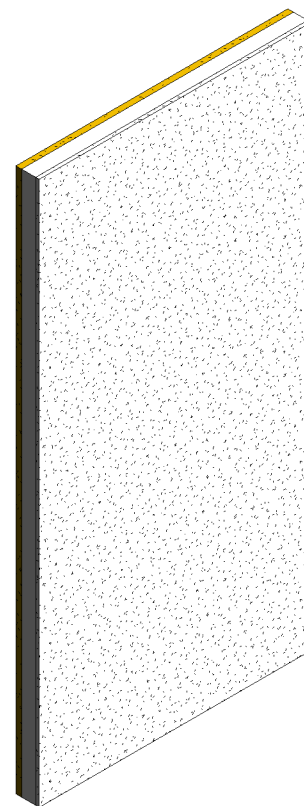
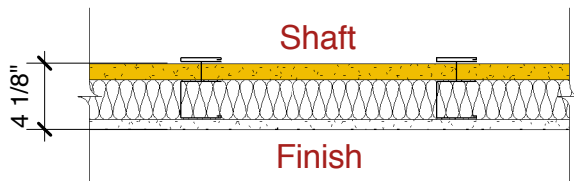


# ShaftWall / ToughRock® Abuse-Guard®

Fiberglass sound insulation thickness is 1" (25 mm), 2-1/2" (64 mm) and 3-1/2" (89 mm) for C-T, C-H or I studs of 2-1/2" (64 mm), 4" (102 mm) and 6" (152 mm) respectively. Finished one side. Components: 1" (25.4 mm) **DensGlass® Shaftliner** panel, studs and one layer of 5/8" (15.9 mm) **ToughRock® Abuse-Guard®** or 5/8" (15.9 mm) **ToughRock® Fireguard®** gypsum board installed vertically.



  
**Georgia-Pacific**  
 Gypsum  
 Website: [www.gpgypsum.com](http://www.gpgypsum.com)

**Georgia-Pacific  
 Gypsum**  
 133 Peachtree St.  
 Atlanta, Georgia 30303  
 PH: 1-(800)-225-6119

ShaftWall / ToughRock® Abuse-Guard®

Assembly:	WHI GP/WA 60-01	WHI GP/WA 60-01
Date:	December 2012	
Drawn by:	JAT	Fire Rating: 1 Hr
Checked by:	RSS	