

## It's ready for what's next

Helps make every project easier, faster and more reliable. DensShield® Tile Backer delivers the strength and durability professionals count on, whether it's for floors, walls or ceilings. Choose DensShield® Tile Backer — a smarter, more efficient way to build with confidence.

## Ready to Learn More?

For additional details and guidance, refer to the following resources:



**Technical Guide**  
Physical properties, product limitations, testing data and fire safety information



**Overview Brochure**  
Product highlights, key features and benefits, and ideal applications



**Installation Guide**  
Step-by-step instructions for proper installation of DensShield® Tile Backer



**Warranties**  
Find warranties for residential and commercial construction

Find these resources and more information about DensShield® Tile Backer at [www.buildgp.com/densshield](http://www.buildgp.com/densshield).

### Questions? Connect with our Sales and Technical Team:

**U.S.A.**  
North: 1-800-947-4497  
South: 1-800-327-2344  
Central: 1-800-231-6060 x 7709  
Midwest: 1-800-876-4746  
Pacific Northwest: 1-800-444-0092  
Pacific Southwest: 1-800-824-7503

**CANADA**  
Canada Toll Free:  
1-800-387-6823  
  
**TECHNICAL HOTLINE**  
U.S.A. and Canada:  
1-800-225-6119



For full warranty information, refer to the DensShield® Tile Backer Limited Warranty

For product fire, safety and use information, visit [www.buildgp.com/safetyinfo](http://www.buildgp.com/safetyinfo)

DENSSHIELD and the GEORGIA-PACIFIC logo are trademarks owned by or licensed to GP Gypsum. DUROCK is a trademark owned by U.S. Gypsum Company. HARDIEBACKER is a trademark owned by James Hardie. ©2025 GP Gypsum. All rights reserved. Lit# 532242



## Questions & Answers



# DensShield® Tile Backer is uncomplicated, reliable and built for your success.

DensShield® Tile Backer is designed for use as a substrate for tile walls, ceilings, countertops, and commercial and residential floor applications in high-moisture areas. The special moisture-resistant, treated core — covered front and back by fiberglass mats and topped with an acrylic coating — is lighter than the leading cement board brands (based on 1/2" [12.7 mm] comparison). The unique construction makes it a preferred product for applications in high-moisture areas.

## Applications

- Bathrooms  
(shower walls and niches, tub walls, floors and ceilings)
- Kitchens  
(backsplash, walls, countertops and floors)
- Residential and light commercial floors
- Non-tiled walls and ceilings in indoor swimming pool enclosures
- Residential steam rooms

## Available Sizes

- 1/4" (6.4 mm) high-density DensShield® Tile Backer underlayment panels for countertops and floors are available in one width:
  - 4' x 4' (1,220 mm x 1,220 mm)
- 1/2" (12.7 mm) DensShield® Tile Backer panels can be used on walls, floors, counters, backsplashes and ceilings in the following widths:
  - 32" x 5' (813 mm x 1,524 mm)
  - 4' x 5' (1,220 mm x 1,524 mm)
  - 4' x 8' (1,220 mm x 2,438 mm)
- 5/8" (15.9 mm) DensShield® Tile Backer panels may be used in appropriate fire-rated assemblies and are available in one width:
  - 4' x 8' (1,220 mm x 2,438 mm)

## For More Information

For complete technical information, independent test data, application instructions, warranty and specifications, visit our website at [buildgpc.com/densshield](http://buildgpc.com/densshield)

# It's Really That Easy

With DensShield® Tile Backer, you can trust in a product that's as simple to install as it is effective. From its lightweight design to its moisture-resistant features, DensShield® panels saves time and effort while delivering lasting performance.

DensShield® Tile Backer—  
it's ready for what's next.



Fire Protection

31 | Can DensShield® Tile Backer be used as a substrate for tile installations around a fireplace or as a fireplace heat shield?

DensShield® Tile Backer can be a great option for tiling around a decorative interior fireplace surround. But, DensShield® Tile Backer is not designed to be used as a heat shield or radiant barrier for fireplaces or wood stoves.

32 | Can DensShield® Tile Backer be used in fire-rated assemblies?

Yes, 5/8" (15.9 mm) DensShield® Tile Backer is manufactured to meet Type X requirements (per ASTM C1178) and can be substituted in any generic fire rated assemblies using a 5/8" (15.9 mm) Type X gypsum board. This allows for the use of numerous one-hour and two-hour assemblies for wood and metal frame construction.

DensShield® Tile Backer also has advantages in fire rated assemblies over other tile backer types. Cement tile backer assemblies require mineral wool insulation in the wall cavity and tile installed on the backer to deliver the one-hour fire endurance rating. DensShield® Tile Backer can deliver a fire rated assembly without mineral wool insulation or tile.

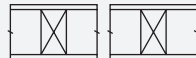
GA FILE NO. WP 3615 | PROPRIETARY

Glass Mat Gypsum Board and Wood Studs

One layer 5/8" proprietary Type X glass mat water-resistant gypsum backing board applied parallel or at right angles to 2 x 4 wood studs 16" o.c. phosphate-coated nails, 1-7/8" long, 1/4" diameter cupped heads, 8" o.c. Joints staggered 16" on opposite sides and covered with 10 x 10 alkali-resistant mesh tape and tile adhesive. (LOAD-BEARING)

PROPRIETARY GYPSUM BOARD | GP Gypsum | 5/8" DensShield® Fireguard® Tile Backer

1-HOUR FIRE | 30 TO 34 STC SOUND



Thickness: 4-3/4"  
Approx. Wt: 7 psf  
Fire Test: WHI-495-0853, 5-14-87;  
WHI-495-0854, 5-15-87  
Sound Test: See WP 3605 (OR 64-8, 2-4-64)



Table of Contents

- 03 Why Choose DensShield® Tile Backer?
- 05 DensShield® Tile Backer vs. Cement Backer Boards
- 09 Moisture Protection
- 10 General Installation Questions
- 11 Fastening
- 12 Taping and Thin Set
- 13 Tiling
- 14 Repairing
- 16 Showers
- 18 Flooring
- 20 Residential Steam Rooms
- 21 Fire Protection



Why Choose DensShield® Tile Backer?

01 | What are the features and benefits of DensShield® Tile Backer?

Benefits	Easy and Versatile	Features
	Easy to Handle	Built in moisture barrier with simple instructions
	Easy to Install	Lighter than leading cement and fiber cement board brands, reducing effort
	Lower Project Cost	Built-in moisture barrier helps save time and effort versus cement and fiber-cement boards that require the purchase and application of a separate moisture barrier in wet applications
	No Special Tools	Scores and snaps with a utility knife and installs with standard fasteners unlike cement and fiber-cement boards that require specialized cutting tools and fasteners
	Versatile Application	Comes in a variety of sizes and designed for easy application over wood subflooring and wall framing
Protective and Durable		
	Superior Moisture Protection	Unique moisture-resistant core outperforms cement and fiber-cement boards in protecting walls in wet, high-humidity areas
	No Cement “Shrapnel”	Non-abrasive dust won’t damage exposed and finished surfaces like tubs and sinks.
	Mold and Mildew Resistant¹	Rated GREENGUARD Microbial-Resistant it is designed to resist mold and mildew activity in wet applications²
	Strong	Rigorously tested for strength and durability; flexural strength is approximately the same in parallel or perpendicular directions
	Support and Peace of Mind	Lifetime Limited Warranty in residential applications backed by the trusted Georgia-Pacific brand*
	Fire Resistant	Achieves a fire resistance rating without tile and insulation when using 5/8” [15.9 mm] DensShield® Tile Backer in the assembly

Residential Steam Rooms

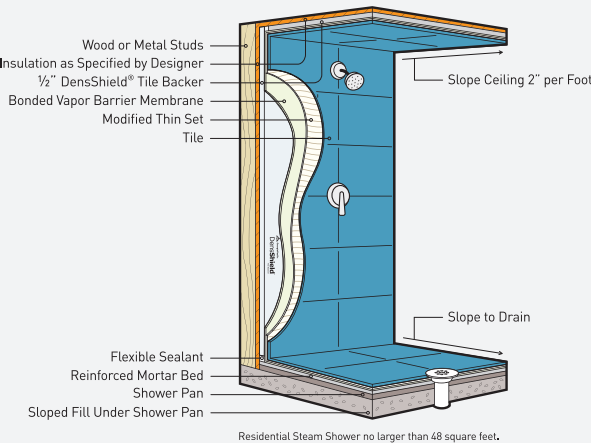
30 | Can DensShield® Tile Backer be used in residential steam rooms?

Yes. But please follow the specific installation recommendations in Installation Guide.

1. Do not install a vapor barrier behind DensShield® Tile Backer.
2. Apply DensShield® Tile Backer to all wall and ceiling surfaces that will constitute the steam room using corrosion-resistant fasteners 6” (152 mm) o.c. along all framing members. All parts of the steam room shall be tiled. Caution: Exposing materials such as wallpaper, joint compound, drywall or non-tiled DensShield® Tile Backer panels may result in unsatisfactory performance of these materials.
3. Tape all corners and joints with a self-adhering alkali-resistant mesh tape and embed with a modified thin set. Spot fasteners that were incidentally counter-sunk and other surface deformations.
4. Roller apply a liquid waterproofing material such as LATICRETE® 9235 Waterproofing Membrane, or equal, directly over the entire DensShield® Tile Backer surface covering all fasteners, corners and joints. As an alternative to taping corners and joints in step 3, corners and joints may be finished with a liquid membrane manufacturer’s taping procedures for vertical surface. See manufacturer’s directions.
5. Seal around all penetrations and where DensShield® Tile Backer meets dissimilar materials with a flexible silicone sealant.
6. Apply tile with a modified thin set per manufacturer’s recommendations.
7. Use flexible sealant as grout in all corners.

8. Use unfaced fiberglass insulation in the wall cavity to retard heat. If using kraft-faced insulation, cut 4” (102 mm) slits in kraft paper every 3” (76 mm) in both directions.

DensShield® Tile Backer Tile Installation  
Residential Steam Room



**Limitation:** Residential applications only. No larger than 48 sq. ft. (4.5 m²).

**Operation and maintenance:** The steam generation unit should be controlled by a timer to avoid incidental lengthy exposure. Maintenance of grout and caulking of corners due to movement should be performed when required.

Flooring

28 | Is DensShield® Tile Backer installed any differently than other tile backers in flooring applications?

No. DensShield® Tile Backer in either the ¼" (6.4 mm) or ½" (12.7 mm) thickness is installed the same way, following the guidelines below:

Adhere DensShield® Tile Backer panels, gray, coated side up, to 5⁄8" (15.9 mm) minimum APA exterior-grade plywood subfloor or ¾" (19 mm) modified thin set (complying with ANSI A118.4) liberally applied with a ¼" (6.4 mm) square notched trowel. This is the same recommendation as Tile Council of North America.

Embed DensShield® Tile Backer into mortar while still pliant (do not exceed open time). Stagger DensShield® Tile Backer joints from subfloor joints; fasten with 1-¼" (32 mm) galvanized roofing nails or corrosion-resistant screws. Avoid driving fasteners into the joists to avoid nail pops. Space fasteners no greater than 8" (203 mm) o.c. in both directions. Drive fasteners flush with the surface — do not countersink. Apply 2" (51 mm) alkali-resistant mesh tape over joints and embed with modified thin set.

Staples: ¼" (6.4 mm) DensShield® Tile Backer only ¼" (6.4 mm) or larger crown corrosive-resistant chisel-point staples equal to approximately the total thickness of underlayment and subfloor. Staples shall be placed 2" (51 mm) o.c. around the perimeter and 4" (102 mm) o.c. in the field ensuring that the staples are between 3⁄8" (3 mm) and ½" (12.7 mm) from ends and edges. Apply flooring-grade tile with modified thin set (ANSI A118.4).

Tile must be a minimum size of 2" × 2" (51 mm × 51 mm) or larger. Full-thickness thresholds should be used, butted against the edge of DensShield® Tile Backer panels and flush with the tile surface.

Use latex Portland cement floor grout (ANSI A118.6).

Prior to tile installation, all backer boards should be protected from very heavy loads and construction traffic such as moving appliances.

29 | Can DensShield® Tile Backer be used in floor radiant heat systems?

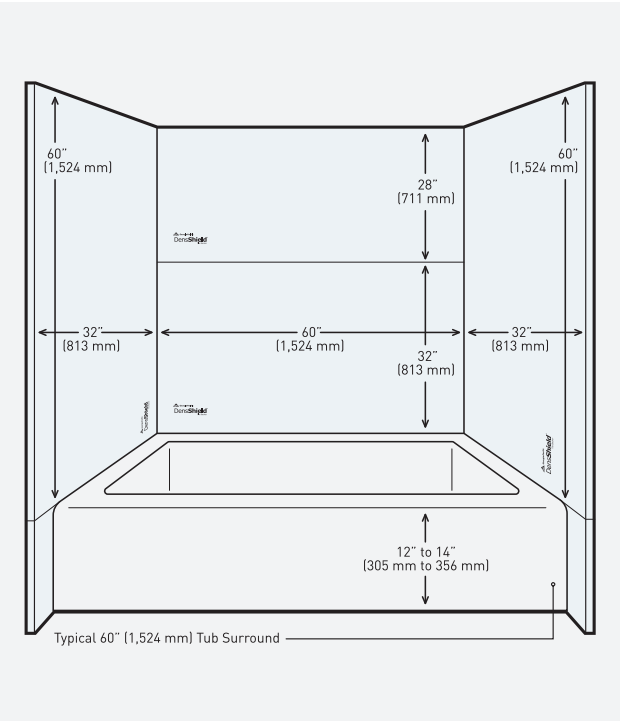
Yes, DensShield® Tile Backer can be used in floor radiant heat systems. Please refer to floor radiant heat system manufacturer installation instructions.

However, DensShield® panel should not be used in conjunction with radiant heat systems that exceeds 125F°.

Why Choose DensShield® Tile Backer?

02 | Why is DensShield® Tile Backer available in a 32" × 5'?

A common bathtub size is 30" wide by 60" long and traditional wood framing is spaced 16" on center. The 60" DensShield® Tile Backer dimension matches common tub lengths. The 32" dimension of DensShield® Tile Backer is sized to fit slightly past common tubs and match framing spacing. This more convenient size can reduce the number of cuts needed for installation. This means less cuts, less waste and an easier install — saving time and effort on the job.



03 | Do DensShield® panels meet 2024 IRC and IBC codes for wet areas?

Yes. DensShield® Tile Backer is manufactured to ASTM C1178, which is one of three standards acceptable as a backer board in tub and shower areas.

04 | Does DensShield® Tile Backer have industry recognition?

Yes. DensShield® Tile Backer is found in 16 assemblies in the TCNA handbook for floors, walls, ceilings, tubs and showers and is manufactured to meet ASTM C1178. Georgia-Pacific has long been a supporter of the TCNA and is active in other industry associations.

\* See warranties for complete terms, conditions and limitations. For a copy of the warranty or for technical details, visit [www.buildgpc.com](http://www.buildgpc.com).

1 No material can be considered mold proof. When properly used with good design, handling and construction practices, our Dens® Suite of Gypsum Products provides increased moisture and mold resistance compared to standard paper-faced wallboard products.

2 The score of 10 in the ASTM D3273 test, indicates no mold growth in a 4-week controlled laboratory test. The mold resistance of any building product when used in actual job site conditions may not produce the same results as were achieved in the controlled, laboratory setting. No material can be considered mold proof. For additional information concerning mold resistance, see [www.buildgpc.com/safetyinfo](http://www.buildgpc.com/safetyinfo).

DensShield® Tile Backer vs. Cement Backer Boards

05 | What makes DensShield® Tile Backer better than cement-based tile backers?

DensShield® Tile Backer has a considerable weight advantage over cement and fiber cement backers. DensShield® Tile Backer panels are lighter than the leading cement and fiber cement board brands (½" [12.7 mm] comparison). Overall, that makes DensShield® Tile Backer easier to handle on the jobsite and faster to install. Additionally, DensShield® Tile Backer is much

easier to score, cut and fasten than cement and fiber cement board, requiring no special tools or fasteners. Most importantly, it is highly resistant to wicking and protects the wall cavity from moisture without an additional vapor barrier. DensShield® Tile Backer panels accepts modified thin sets for tile installation.



Weights 64 lbs. (29 kg.) per ½" x 4' x 8' (12.7 mm x 1,220 mm x 2,438 mm) panel

Has built-in moisture barrier to protect tile installation

Scores and snaps easily with a standard utility knife

No special fasteners required

Weights about 80 lbs. (36 kg.) per 13/32" x 4' x 8' (10.3 mm x 1,200 mm x 2,438 mm) panel — not a true ½" (12.7 mm)

Requires a separate membrane when used in wet areas according to the Handbook for Ceramic Tile from the Tile Council of North America

Cut with a carbide tip scoring tool, a circular saw or mechanical shears

Need special screws

Leading cement board weighs approximately 77 lbs. (34.93 kg.) per ½" x 4' x 8' (12.7 mm x 1,200 mm x 2,438 mm) [2.4 lbs./sq. ft. [11.7 kg./m²] = 2.4 x 32 = 76.8] \*according to USG Durock®

Requires a separate membrane when used in wet areas according to the Handbook for Ceramic Tile from the Tile Council of North America

Is more difficult to cut and fasten than DensShield® Tile Backer

Requires special fasteners

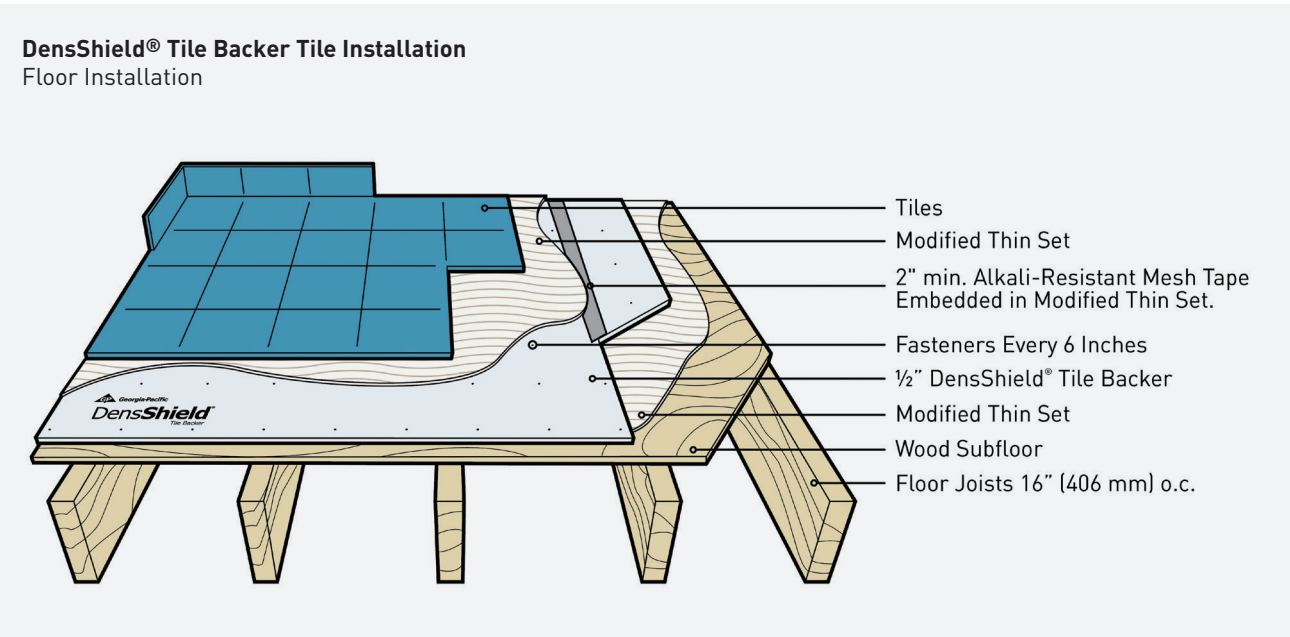
Generates apprehensive debris during cutting

Flooring

27 | Can DensShield® Tile Backer be used in floor applications?

Yes. Both ¼" (6.4 mm) and ½" (12.7 mm) DensShield® Tile Backer can be used in floor applications. Both of these thicknesses passed the Robinson Floor Test, the industry standard floor test for residential and light commercial ratings. The Robinson Floor Test

(ASTM C627) is designed to determine how a tile assembly holds up under extreme wear and weight conditions. DensShield® Tile Backer achieves the same light commercial rating as cement and fiber cement backers.





Showers

26 | Can DensShield® Tile Backer panels be used in a One-Coat-Float-Method wall tile system?

Yes, DensShield® Tile Backer can be installed as a baseboard for a traditional reinforced floated wall tile system (using metal lath) attached to the framing. DensShield® Tile Backer may be hung either vertically or horizontally for wall applications.

Gray, coated side should always face out, away from the studs.

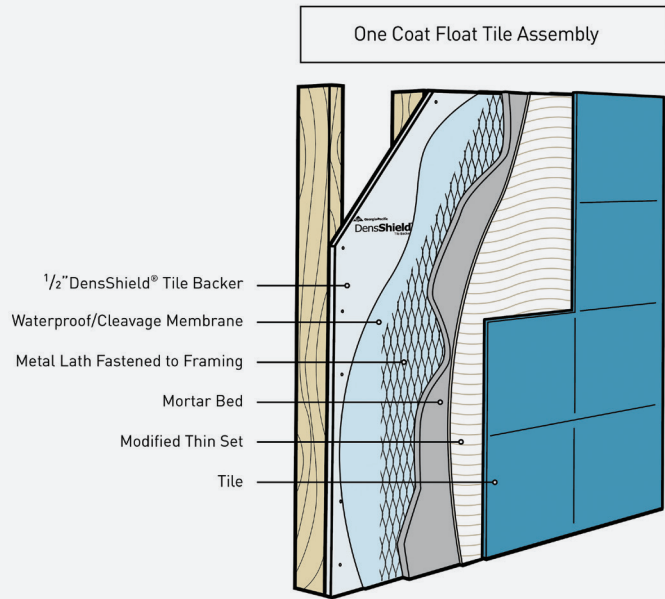
Framing should be spaced no greater than 16" (406 mm) o.c. Attach DensShield® Tile Backer, spacing fasteners 6" (152 mm) o.c. along studs for wood or minimum 20-gauge\* (33 mils) steel framing.

Attach membrane and lath per manufacturers' guidelines.

Apply mortar bed per TCNA assembly W222. Membrane (ANSI A108A-2.1.8) shall be installed such that water is continually sloped toward the drain.

\*For equivalent and effective gauge steel studs, we have no evaluation or installation recommendations.

DensShield® Tile Backer Tile Installation  
Wall Installation



DensShield® Tile Backer vs. Cement Backer Boards

Compare DensShield® Tile Backer to Cement-Based Tile Backer

Features/Benefits	DensShield® Tile Backer	Fiber Cement Tile Backer	Cement Tile Backer
Built-in moisture barrier	Yes	No	No
Scores and snaps easily with a standard utility knife	Yes	No	No
Lightweight (depending on panel thickness)	Yes	No	No
No special fastener required (refer to Fastener Guide)	Yes	No	No
Cutting debris nonabrasive to tubs, shower pans and other fixtures	Yes	No	No
Protects wall cavity from moisture intrusion without an additional moisture barrier	Yes	No	No

1 Based on 1/2" comparison | 2 Source: USG Durock® 1/2" x 4' x 8' | 3 Source: Hardibacker® 0.42" x 4' x 8'



DensShield® Tile Backer vs. Cement Backer Boards

06 | How does DensShield® Tile Backer save time and effort versus cement-based tile backers in wall applications?

Unique Sizes, Less Cuts

- ½ thickness, 4' x 8' panel
- ½ thickness, 32" x 5' panel
- ½ thickness, 4' x 5' panel
- ¼ thickness, 4' x 4' panel
- ⅝ thickness, 4' x 8' panel

Easier Handling

DensShield® Tile Backer weighs less and is easier to handle than cement or fiber cement boards which means a single installer can complete a job without additional help.

Quick to Cut

With DensShield® Tile Backer, cutting is as simple as scoring and snapping. The only tool needed is a standard utility knife, and the cut edge will always be clean. With heavy cement board, cutting and scoring is difficult. With DensShield® Tile Backer panels, cutouts for water supply piping, showerheads, etc., are easily and accurately cut.



Straightforward Fastening

DensShield® Tile Backer can be fastened close to its edge without edge breakout.

Built in Moisture Barrier

With DensShield® Tile Backer panels, there is no extra expense or labor to add a waterproof membrane. Additional vapor barriers behind DensShield® Tile Backer are not required or recommended. Cement backers are highly porous, which means a secondary barrier is needed and required by TCNA in wet areas to protect the wall cavity.



Showers

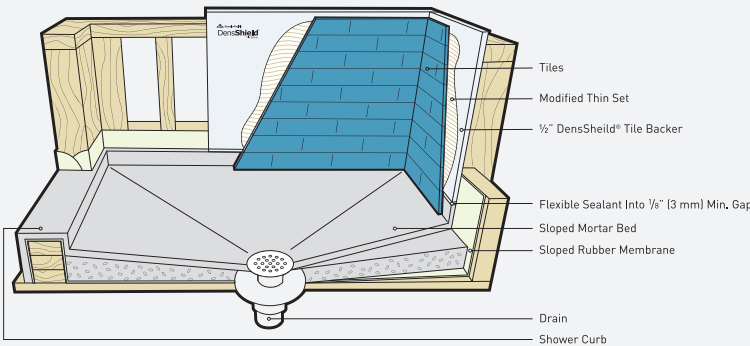
25 | Can DensShield® Tile Backer be used around shower pans?

Yes. DensShield® Tile Backer should always be installed above a shower pan with a minimum ⅛" (3 mm) gap. To prevent water penetration, fill the gap with a flexible sealant.

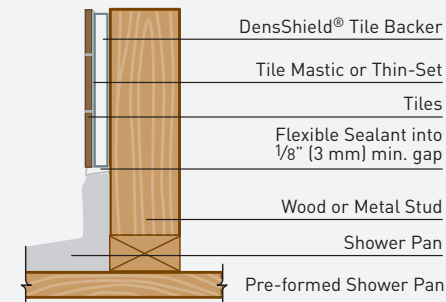
For showers with curbs, apply a waterproof membrane up walls a minimum 6" (152 mm) and a maximum 8" (203 mm). Wood or other satisfactory blocking should be applied at the bottom framing to support the vertical sides of the shower pan or membrane. The shower pan or rubber membrane must be adequately sloped to the drain or weep hole to permit proper drainage.

If a shower pan or tub has a mounting flange, furring strips can be added over the framing to compensate for the flange. This enables DensShield® Tile Backer to be installed within ⅛" (3 mm) from the top of the shower or tub.

DensShield® Tile Backer Tile Installation  
Shower with Curbs



DensShield® Tile Backer Tile Installation  
Shower Pan





Repairing

24 | Can damaged tiles be replaced when DensShield® Tile Backer is used?

Yes. Here are some general guidelines and procedures:

Small Areas

- 1. Remove grout from around the affected area.
- 2. Carefully score through just the acrylic finish around the affected area.
- 3. Remove the tile, including the acrylic DensShield® Tile Backer finish, exposing the silicone-treated core.
- 4. Use a penetrating sealer/primer such as shellac primer or solvent-based primer to seal the exposed core. Then allow to dry.
- 5. Install tile with either a mastic or modified thin set.
- 6. RegROUT the area.

Large Areas

- 1. Remove affected tile area and surrounding tiles from stud to stud. This includes removing the DensShield® Tile Backer panels.
- 2. Fasten additional studs known as “scabs” to the sides of the original studs to support the new DensShield® Tile Backer panels.
- 3. Caulk the edges of the new DensShield®Tile Backer panels with a flexible sealant so the joint is waterproof.
- 4. After caulk has cured, install new tiles and grout.

DensShield® Tile Backer vs. Cement Backer Boards

07 | The maximum stud spacing for some cement boards is 16” (406 mm) o.c. Can DensShield® Tile Backer be used on 16” and wider framing spacing?

Yes, both 1/2” and 5/8” DensShield® Tile backer can be used on 16” o.c. or 24” o.c framing. 1/2’ DensShield® tile backer can be used on 24” o.c. framing with blocking added at horizontal joints or on 16” o.c. framing without blocking.

5/8” DensShield® Tile Backer can be installed on both 16” o.c and 24” o.c. framing without blocking.

08 | Does DensShield® Tile Backer require a separate moisture barrier?

No, DensShield® Tile Backer does not require a separate moisture membrane in wet area walls. DensShield® Tile Backer repels water at the surface with a built in moisture barrier.

For installers who want to add an additional layer of water-proofing, a topical waterproofer can be added. Check with waterproofing manufacturer for compatibility.

09 | Can DensShield® Tile Backer be used on exterior applications?

DensShield® Tile Backer is not for exterior use.



Moisture Protection

10 | When installing DensShield® Tile Backer in wet applications should flexible sealant be used between adjacent panels?

Yes, when installing DensShield® Tile backer panels in wet applications you should apply flexible sealant between adjacent panels at corners and as a best practice, add sealant between all panel seams.

Flexible sealant should also be used around tub bases, shower pans and plumbing penetrations.

11 | Are there any applications where Georgia-Pacific recommends extra waterproofing be added over DensShield® Tile Backer?

Yes, there are a few areas where additional topical waterproofing could be beneficial to a DensShield® Tile Backer installation. These include:

Wet areas where DensShield® Tile Backer is installed horizontally, like on a shower bench or a shower niche.

When the core of DensShield® Tile Backer is exposed in a wet area, like in an outside corner.

In situations where DensShield® Tile Backer is installed into the mud bed, topical waterproofing should be added to the face of the DensShield® panel

12 | Does DensShield® Tile Backer require the use of vapor retarder to protect wall cavities?

No, Vapor retarders should not be installed directly behind DensShield® Tile Backer panels.

In instances where it is required by local code, a #15 felt behind the DensShield® Tile Backer is permissible.



Repairing

22 | When installing DensShield® Tile Backer fasteners should fasteners be countersunk?

No. Fasteners should be flush with the coated surface and should not be countersunk.

23 | Can DensShield® Tile Backer be repaired if fasteners are countersunk?

Yes. Minor damage to the surface can easily be repaired bycovering the indented or blemished area with standard tile-setting material.



Tiling

20 | What thin set or adhesive should be used to set tile on DensShield® Tile Backer?

We recommend modified thin set complying with ANSI A118.4 to set tile on DensShield® Tile Backer and to embed alkali resistant mesh tape on panel to panel seams.

Look for “Meets or Exceeds” ANSI A118.4 printed on the thin set packaging.

21 | Is there a limit on tile sizes and thicknesses for walls and ceilings?

Tile comes in a variety of sizes, shapes and weights and most are appropriate over DensShield® Tile Backer for walls, ceilings, floors and countertops. For tile larger than 12 × 12, consult the tile manufacturer or appropriate authority for proper system design and deflection criteria. Consult tile manufacturing literature for system design questions for tile larger than 12 × 12 floor or wall installations. The system should be designed for a deflection of L/720.



General Installation Questions

13 | Can DensShield® Tile Backer be used as a nailbase?

DensShield® Tile Backer panels should not be used as a base for nailing and mechanical fastening.

14 | Can DensShield® Tile Backer be installed horizontally and vertically?

Yes. The flexural strength of DensShield® Tile Backer panels is approximately the same in both parallel and perpendicular directions. This allows wall and ceiling applications to be installed either parallel or perpendicular to the supporting members and results in fewer panel joints. DensShield® Tile Backer can be installed over both wood framing and steel stud construction by spacing fasteners 6" (152 mm) o.c. along studs for wood or a minimum 20-gauge (33 mils) steel framing.\*

For additional information, check out our installation video



\*For equivalent and effective gauge steel studs, we have no evaluation or installation recommendations.

15 | Does DensShield® Tile Backer resist moisture wicking?

Yes. DensShield® resists moisture wicking, effectively protecting wall cavities and subfloors.

16 | Can DensShield® Tile Backer be applied directly to concrete or masonry block?

No. DensShield® Tile Backer should not be applied directly to concrete or masonry block. Framing or furring of the wall is necessary.

17 | When a smooth surface is needed for painting or wall coverings, can DensShield® Tile Backer be treated with a primer?

Yes. DensShield® Tile Backer can be primed with a skim coat of setting compound prior to application of wallpaper or the finish coat.





Fastening

18 | How is DensShield® Tile Backer fastened in place?

No special or unique fasteners are required to fasten DensShield® Tile Backer panels in place. For wood studs, use galvanized roofing nails, rust-resistant drywall screws or bugle head deck screws. Fasteners should be long enough to penetrate at least 3/4" (19 mm) into the wood framing members. For metal framing, a variety of rust-resistant screws can be used.



Taping and Thin Set

19 | How are joints finished when using DensShield® Tile Backer for tile applications?

Flexible sealant is applied between panels in wet areas only. For all applications, apply a self-adhesive 2" (51 mm) wide alkali-resistant mesh tape over all joints and corners. This is the same type of tape used for taping cement board joints. Then, embed the tape with the same material used to set tiles.

Do not use all-purpose or setting-type drywall compounds under tile applications. Pull tile setting materials tightly over the joint to reduce crown in the joint area. Allow tile-setting material to dry prior to setting the tiles.

