

# TECHNICAL BULLETIN

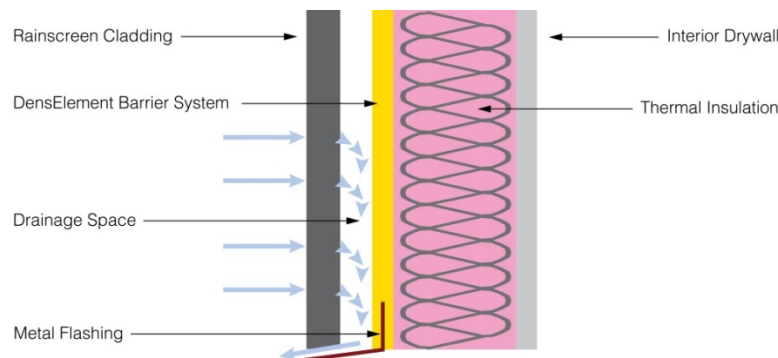
**DATE:** April 5, 2016

**SUBJECT:** DensElement™ Barrier System Compatibility with Rainscreen Cladding Systems

In response to questions about rainscreen compatibility with the DensElement™ Barrier System, please refer to the following information.

An **open rainscreen**, defined as a wall cladding system where the joints of the cladding system are left untreated or sealed, that stands off from the DensElement™ Barrier System surface to create a capillary break to allow drainage, air circulation and evaporation, is an acceptable cladding system applied over the DensElement™ Barrier System. For cladding gaps exceeding ½-in., please refer to PROSOCO's Rainscreen Bulletin:

[http://www.prosoco.com/Content/Documents/Product/RG\\_Cat\\_5\\_Rain\\_Screen\\_PDS\\_030116\\_C.pdf](http://www.prosoco.com/Content/Documents/Product/RG_Cat_5_Rain_Screen_PDS_030116_C.pdf)



When properly installed, and when cladding gaps do not exceed ½" after installation, the use of open rainscreen cladding systems over the DensElement™ Barrier System does not invalidate the five-year limited warranty for performance of the DensElement™ Barrier System as a water-resistive barrier and air barrier. Please refer to [DensElement.com](http://DensElement.com) for full limited warranty details.

The DensElement™ Barrier System consists of three system components: DensElement™ Sheathing, PROSOCO R-Guard® FastFlash® liquid flashing and R-Guard® PorousPrep® water-based primer. When properly installed, the DensElement™ Barrier System is a vapor permeable water-resistive and air barrier (WRB-AB) when the joints, fasteners, penetrations, openings and transitions are properly sealed with PROSOCO FastFlash® liquid flashing. The system solution eliminates the need to cover the face of the sheathing with traditional WRB-AB systems, such as building wrap, fluid-applied membranes or self-adhered membranes.

For installation details and full limited warranty details, visit [DensElement.com](http://DensElement.com).