



# INSTALLATION GUIDE



# INSTALLATION INSTRUCTIONS

Surfaces to receive membrane must be dry, clean, firm, free of bond-inhibiting agents, such as dust, mud, oils, curing compounds or any other substances that might prevent placement and bonding of membrane.

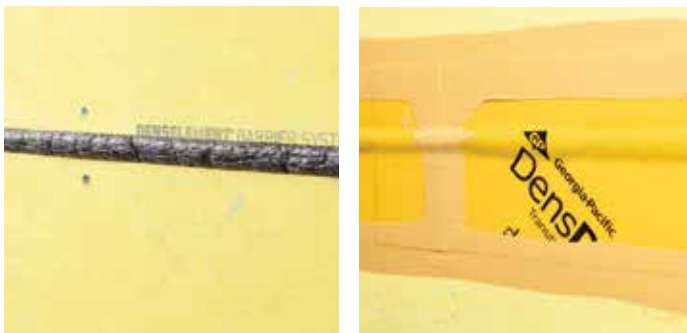
Determine appropriate widths and lengths of DensDefy™ Transition Membrane prior to cutting. DensDefy™ Transition Membrane may be cut with scissors or a sharp utility knife. Use of longest lengths possible will minimize overlaps. For longer lengths, additional applicators may help avoid wrinkles or fishmouths.

## Transitions from Sheathing to Foundation, or from Sheathing to Dissimilar Materials



1. Choose the appropriate DensDefy™ Transition Membrane width to achieve a 2-in. (50 mm) minimum overlap on both sides of the transition. Pre-cut manageable lengths and place over the center of the transition area.  
  
Note: At corners or changes in plane, creasing the membrane prior to placing can help align the membrane.
2. Remove release paper from the DensDefy™ Transition Membrane and press in place following the contour of the substrate, avoiding wrinkles and fishmouths.
3. Use a J roller to apply even pressure to fully adhere the membrane and achieve a smooth and wrinkle free surface.
4. Apply DensDefy™ Liquid Flashing over edges of DensDefy™ Transition Membrane.
5. With a straight edge tool, spread DensDefy™ Liquid Flashing evenly over the membrane edge. Cover a minimum of 1-in. over the edge of the membrane and 1-in. over the adjacent material. Apply at a rate to achieve a minimum 16 wet mil thickness over the membrane edge, leaving no exposed membrane edge.

## Transitions at Floor Line Conditions or Vertical/Horizontal Expansion Joints



1. For gaps greater than ¼" and less than 1", place pre cut lengths over the center of the transition area. Loop the membrane in a concave or convex fashion to accommodate potential movement. Use bond breaker material to ensure membrane does not adhere to surfaces inside the expansion joint. Maintain a minimum 2" (50mm) overlap on both sides of the joint.
2. Use a J roller to apply even pressure to fully adhere the membrane and achieve a smooth and wrinkle free surface.
3. Apply DensDefy™ Liquid Flashing over all edges of DensDefy™ Transition Membrane.
4. With a straight edge tool, spread DensDefy™ Liquid Flashing evenly over the membrane edge. Cover a minimum of 1-in. over the edge of the membrane and 1-in. over the adjacent material. Apply at a rate to achieve a minimum 16 wet mil thickness over the membrane edge, leaving no exposed membrane edge.

## Protection at Sill of Rough Opening



1. As a best practice, apply a bead of DensDefy™ Liquid Flashing at the rough opening sill corners and allow to cure.
2. Apply bowtie reinforcement pieces of DensDefy™ Transition Membrane at rough opening sill corners.
3. Apply pre-cut lengths to sill, covering a minimum of 2 inches of the sheathing adjacent to the opening and wrap a minimum of 4 inches up rough opening jambs.
4. Use a J roller to apply even pressure to fully adhere the membrane and achieve a smooth and wrinkle free surface.
5. Apply DensDefy™ Liquid Flashing over all edges of DensDefy™ Transition Membrane.
6. With a straight edge tool, spread DensDefy™ Liquid Flashing evenly over the membrane edge. Cover a minimum of 1-in. over the edge of the membrane and 1-in. over the adjacent material (minimum 16 wet mil thickness).
7. Apply DensDefy™ Liquid Flashing over the remaining width of the opening jambs, header and adjacent sheathing.
8. Apply DensDefy™ Liquid Flashing over the DensElement® Sheathing adjacent to the jambs and header in a zig-zag or ribbon pattern. Cover a minimum of 2-in. of the sheathing surface adjacent to the opening.
9. With a straight edge tool, spread DensDefy™ Liquid Flashing evenly over the membrane edge. Cover a minimum of 1-in. over the edge of the membrane and 1-in. over the adjacent material. Apply at a rate to achieve a minimum 16 wet mil thickness over the membrane edge, leaving no exposed membrane edge.

## Protection at Rough Opening



1. As a best practice, apply a bead of DensDefy™ Liquid Flashing at rough opening corners and allow to cure.
2. Apply bowtie reinforcement pieces of DensDefy™ Transition Membrane at rough opening sill corners.
3. Apply pre-cut lengths to sill, covering a minimum of 2 inches of the sheathing adjacent to the opening and wrap a minimum of 4 inches up rough opening jambs.
4. Apply pre-cut lengths along rough opening jambs. Overlap, in a shingle lap fashion a minimum 2" (50 mm) onto sill protection.
5. Apply pre-cut lengths along rough opening header. Overlap, in a shingle lap fashion a minimum 2" (50 mm) onto jamb protection.
6. Use a J roller to apply even pressure to fully adhere the membrane and achieve a smooth and wrinkle free surface.
7. Apply DensDefy™ Liquid Flashing over all edges of DensDefy™ Transition Membrane.
8. With a straight edge tool, spread DensDefy™ Liquid Flashing evenly over the membrane edge. Cover a minimum of 1-in. over the edge of the membrane and 1-in. over the adjacent material. Apply at a rate to achieve a minimum 16 wet mil thickness over the membrane edge, leaving no exposed membrane edge.



DensDefy™ Transition Membrane completes the DensElement® Barrier System for your diverse building needs. DensDefy™ Transition Membrane is an accessory product that can be used with DensElement® Barrier System to complete an air and water tight system, and takes the DensElement® Barrier System's proprietary moisture management even further, elevating the envelope finish and ensuring performance compatibility under a single trusted name.



GP Gypsum LLC  
133 Peachtree Street, N.E. | Atlanta, Georgia 30303

**DensDefy.com**

GP Tech Hotline: 800-225-6119

**CAUTION:** For fire, safety and use information go to [BuildGP.com/Safetyinfo](http://BuildGP.com/Safetyinfo).

**HANDLING AND USE:** Observe good industrial hygiene practices.

**WARRANTY:** For current limited warranty for this product, visit [buildgp.com/warranties](http://buildgp.com/warranties)

©2020 GP Gypsum LLC. All rights reserved. Unless otherwise noted, all trademarks are owned by or licensed to GP Gypsum LLC. 1/20 #623008